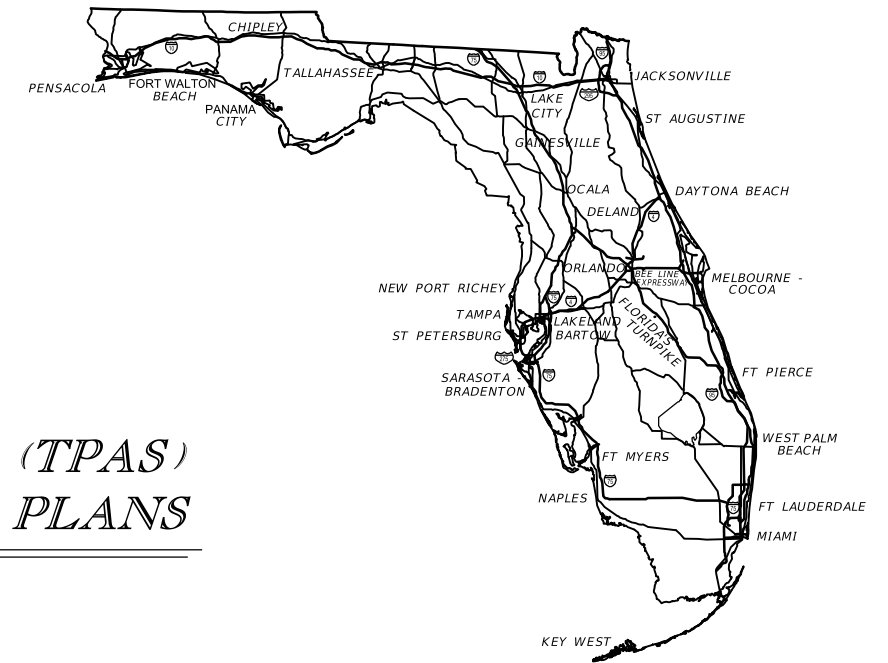


STATE OF FLORIDA
DEPARTMENT OF TRANSPORTATION

CONTRACT PLANS

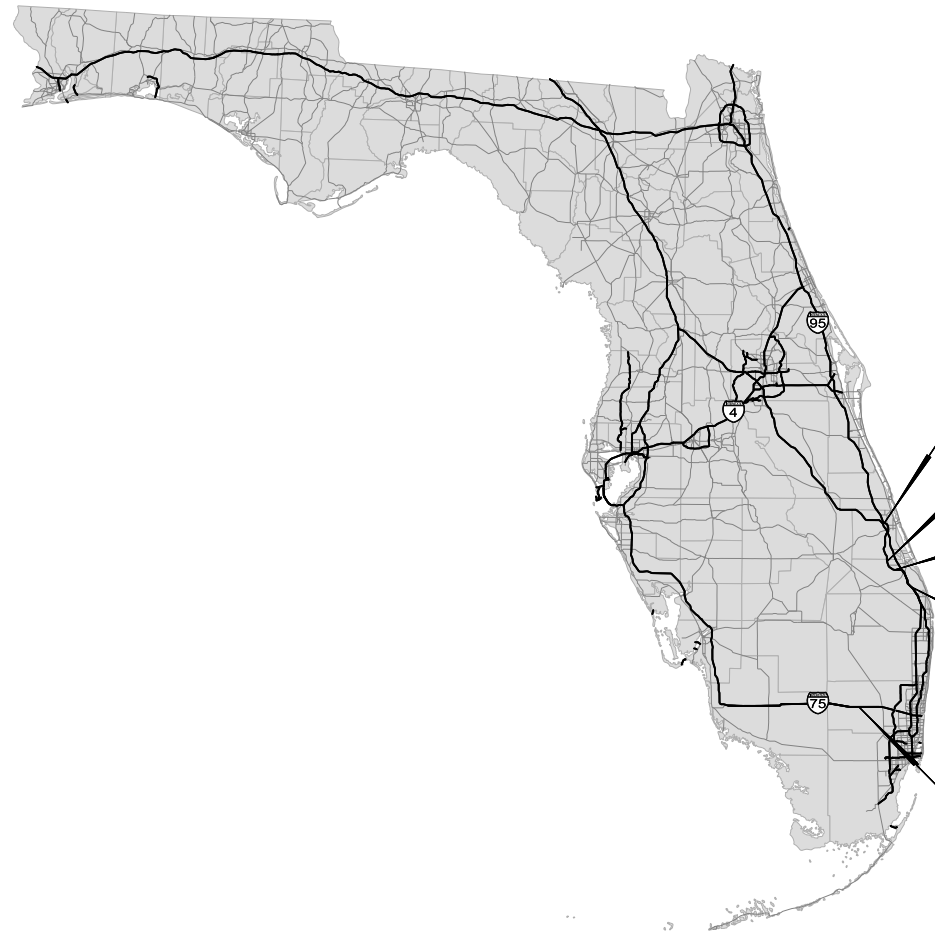
FINANCIAL PROJECT ID 440090-1-52-01



INDEX OF TPAS PLANS

SHEET NO.	SHEET DESCRIPTION
1	KEY SHEET
2	GENERAL NOTES
3	GUIDESIGN WORKSHEET
IT-01 TO IT-07B	ITS PLAN SHEETS

TRUCK PARKING AVAILABILITY SYSTEMS (TPAS)
INTELLIGENT TRANSPORTATION SYSTEM PLANS



ST. LUCIE COUNTY, REST AREAS
40391 NORTHBOUND (MILE MARKER 133)
40392 SOUTHBOUND (MILE MARKER 133)

MARTIN COUNTY, WEIGH STATION
40680 SOUTHBOUND (MILE MARKER 113)

MARTIN COUNTY, REST AREAS
40401 NORTHBOUND (MILE MARKER 106)
40402 SOUTHBOUND (MILE MARKER 107)

MARTIN COUNTY, WEIGH STATION
MARTIN NORTHBOUND (MILE MARKER 92)

BROWARD COUNTY, REST AREAS
40490 EAST/WEST (MILE MARKER 34)

ITS SHOP DRAWINGS
TO BE SUBMITTED TO:

30% PLANS

NOTE: THE SCALE OF THESE PLANS MAY
HAVE CHANGED DUE TO REPRODUCTION.

GOVERNING STANDARDS AND SPECIFICATIONS:
Florida Department of Transportation, 2017 Design Standards and revised Index Drawings as appended herein, and 2017 Standard Specifications for Road and Bridge Construction, as amended by Contract Documents.

For Design Standards click on the "Design Standards" link at the following web site:

<http://www.dot.state.fl.us/rddesign/DesignStandards>

For the Standard Specifications for Road and Bridge Construction click on the "Specifications" link at the following web site:

<http://www.dot.state.fl.us/specificationsoffice/StandardSpecifications>

KEY SHEET REVISIONS	
DATE	DESCRIPTION

TRUCK PARKING AVAILABILITY
SYSTEMS (TPAS) PLANS
ENGINEER OF RECORD: _____

P.E. NO.: _____

FISCAL YEAR	SHEET NO.
16	1

FDOT PROJECT MANAGER: SCOTT THURMAN

GENERAL NOTES

1. THE LOCATION(S) OF THE UTILITIES SHOWN IN THE PLANS ARE BASED ON LIMITED INVESTIGATION TECHNIQUES, AND MARK-UPS FROM UTILITY OWNERS. ALL UTILITIES SHOULD BE CONSIDERED APPROXIMATE ONLY.
2. THE CONTRACTOR SHALL NOTIFY UTILITY OWNERS LISTED THROUGH SUNSHINE STATE ONE CALL OF FLORIDA (811) TWO BUSINESS DAYS IN ADVANCE OF BEGINNING CONSTRUCTION ON THE JOB SITE.
3. FIBER OPTIC AND POWER PULL BOXES AND CONDUIT SHALL BE LOCATED WITHIN 100 FEET OF THE DEVICE THEY SUPPORT. ITS DEVICE LOCATIONS ARE APPROXIMATE AND MAY REQUIRE RELOCATION BY THE PROJECT ENGINEER. IF DEVICE RELOCATIONS OCCUR FOR ANY REASON, THE PULL BOXES AND CONDUIT SUPPORTING THAT DEVICE SHALL BE RELOCATED AND/OR EXTENDED.
4. INSTALL FIBER OPTIC CONDUIT FOR COMMUNICATION TO DEVICES AS SHOWN IN THE PLANS AND IN ACCORDANCE WITH ALL FDOT STANDARDS FOR CONDUIT INSTALLATION.
5. THE CONTRACTOR SHALL BE RESPONSIBLE FOR FURNISHING AND INSTALLING ABOVE GROUND TUBULAR ROUTE MARKERS PER FDOT STANDARDS. MARKERS SHALL BE PLACED AT A MAXIMUM OF 500 FEET AND AT EVERY PULL AND SPLICE BOX. A MARKER LABEL TEMPLATE SHALL BE PROVIDED FOR REVIEW.
6. THE CONDUIT SHALL BE SEALED WITH THE SPECIFIED DUCT PLUG AT THE TIME OF CONDUIT INSTALLATION AND AFTER FINAL FIBER INSTALLATION.
7. ELECTRICAL POWER SERVICE METERS SHALL HAVE A SEPARATE BREAKER FOR EACH ITS CIRCUIT.
8. THE CONTRACTOR SHALL HAND DIG (SOFT DIG) TO A DEPTH OF FOUR (4) FEET WHERE UTILITIES ARE IN CONFLICT PRIOR TO USE OF A MECHANICAL AUGER. ANY POTENTIAL CONFLICTS SHALL BE REPORTED TO THE PROJECT ENGINEER IMMEDIATELY.

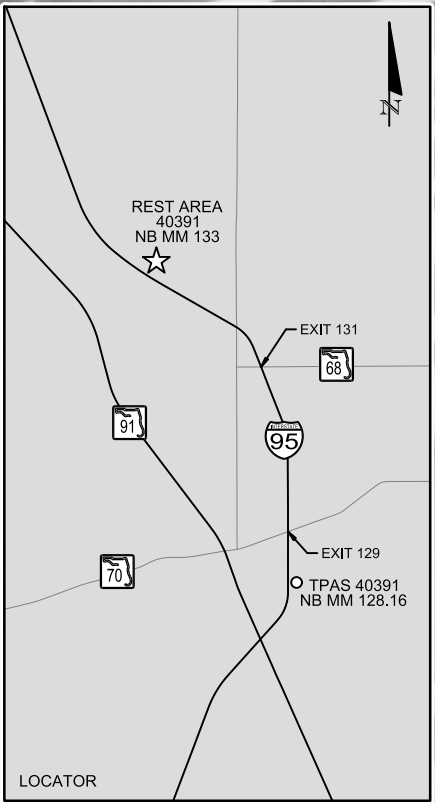
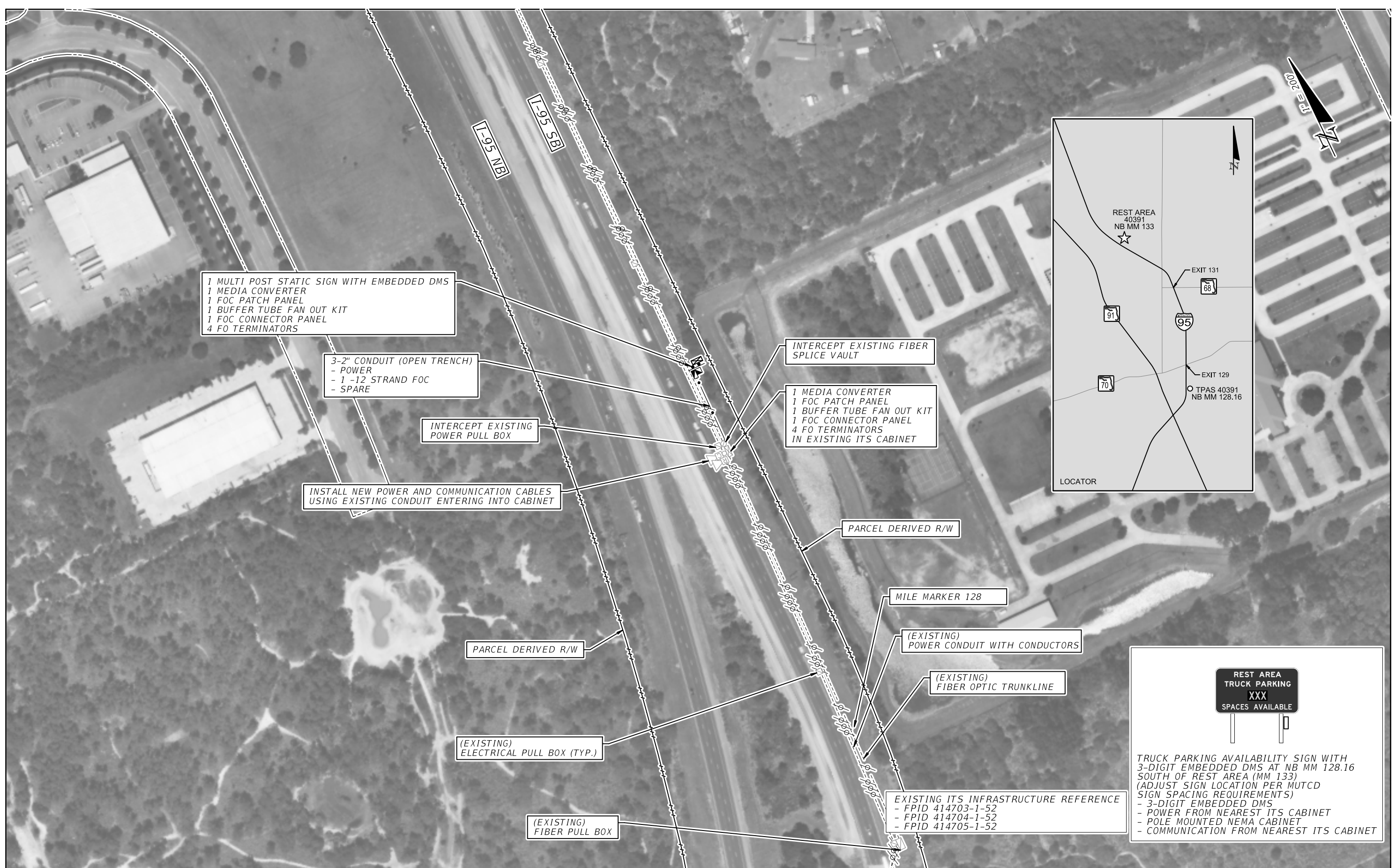
UTILITY OWNERS

- AT&T Distribution
Otis Keeve
954-723-2540
- Broward County
Robert Blount
954-847-2701
- Comcast Cable Communications, Inc
Liam McKenna
904-380-7574
- Comcast Cable - St. Lucie
Tony Springsteel
772-321-3425
- Florida Gas Transmission
Joseph Sanchez
407-838-7171
- Florida Power & Light
Tracy Stern
386-329-5152
- Fort Pierce Utilities
James Carnes
772-466-1600
- Indiantown Telephone System
Larry Luston
772-597-2111
- Lee County Electric
Tom Bailey
239-656-2414

LEGEND

EXISTING	PROPOSED	
		GROUND SENSORS
		REPEATER
		ACCESS POINT
		DETECTION ZONE
		CCTV WITH POLE
		MVDS
		MULTI-POST STATIC SIGN W/ ELECTRICAL DISPLAY SIGN
		BASE MOUNT CABINET
		POLE MOUNT CABINET
		ELECTRICAL PULL BOX
		FIBER OPTIC PULL BOX
		SPLICE VAULT
		POWER SERVICE
		POLE
		DMS
		CONDUIT, OPEN TRENCH
		CONDUIT, DIRECTIONAL BORE
		FIBER OPTIC RUN
		POWER RUN

REVISIONS				STATE OF FLORIDA DEPARTMENT OF TRANSPORTATION			<i>GENERAL NOTES</i>	SHEET NO.
DATE	DESCRIPTION	DATE	DESCRIPTION	ROAD NO.	COUNTY	FINANCIAL PROJECT ID		2
				VARIES	VARIES	440090-1-52-01		



**REST AREA
TRUCK PARKING
XXX
SPACES AVAILABLE**

TRUCK PARKING AVAILABILITY SIGN WITH 3-DIGIT EMBEDDED DMS AT NB MM 128.16 SOUTH OF REST AREA (MM 133) (ADJUST SIGN LOCATION PER MUTCD SIGN SPACING REQUIREMENTS)

- 3-DIGIT EMBEDDED DMS
- POWER FROM NEAREST ITS CABINET
- POLE MOUNTED NEMA CABINET
- COMMUNICATION FROM NEAREST ITS CABINET

REVISIONS				STATE OF FLORIDA DEPARTMENT OF TRANSPORTATION			TRUCK PARKING AVAILABILITY SYSTEM ST. LUCIE COUNTY, FDOT DISTRICT 4 TPAS SIGN 40391 NORTHBOUND MILE MARKER 128.16	SHEET NO. IT-01A
DATE	DESCRIPTION	DATE	DESCRIPTION	ROAD NO.	COUNTY	FINANCIAL PROJECT ID		
				I-95	ST. LUCIE	440090-1-52-01		



EXISTING ITS INFRASTRUCTURE REFERENCE
 - FPID 414703-1-52
 - FPID 414704-1-52
 - FPID 414705-1-52

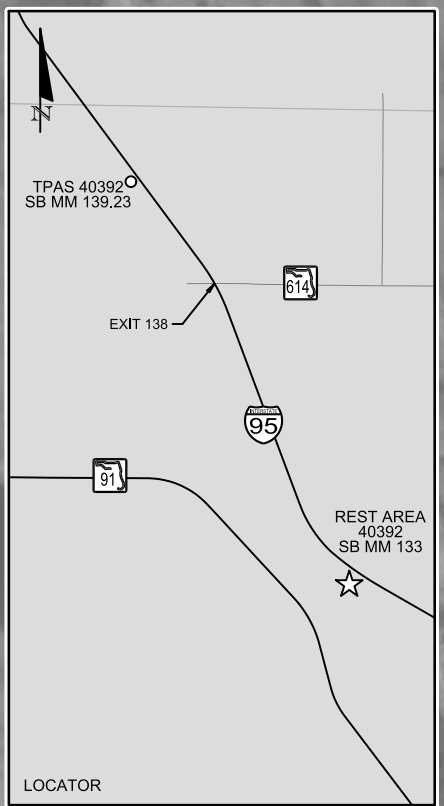
REVISIONS			
DATE	DESCRIPTION	DATE	DESCRIPTION

--

STATE OF FLORIDA DEPARTMENT OF TRANSPORTATION		
ROAD NO.	COUNTY	FINANCIAL PROJECT ID
I-95	ST. LUCIE	440090-1-52-01

TRUCK PARKING AVAILABILITY SYSTEM
 ST. LUCIE COUNTY, FDOT DISTRICT 4
 REST AREA 40392 (43 SPACES)
 SOUTHBOUND MILE MARKER 133

SHEET NO.
IT-02



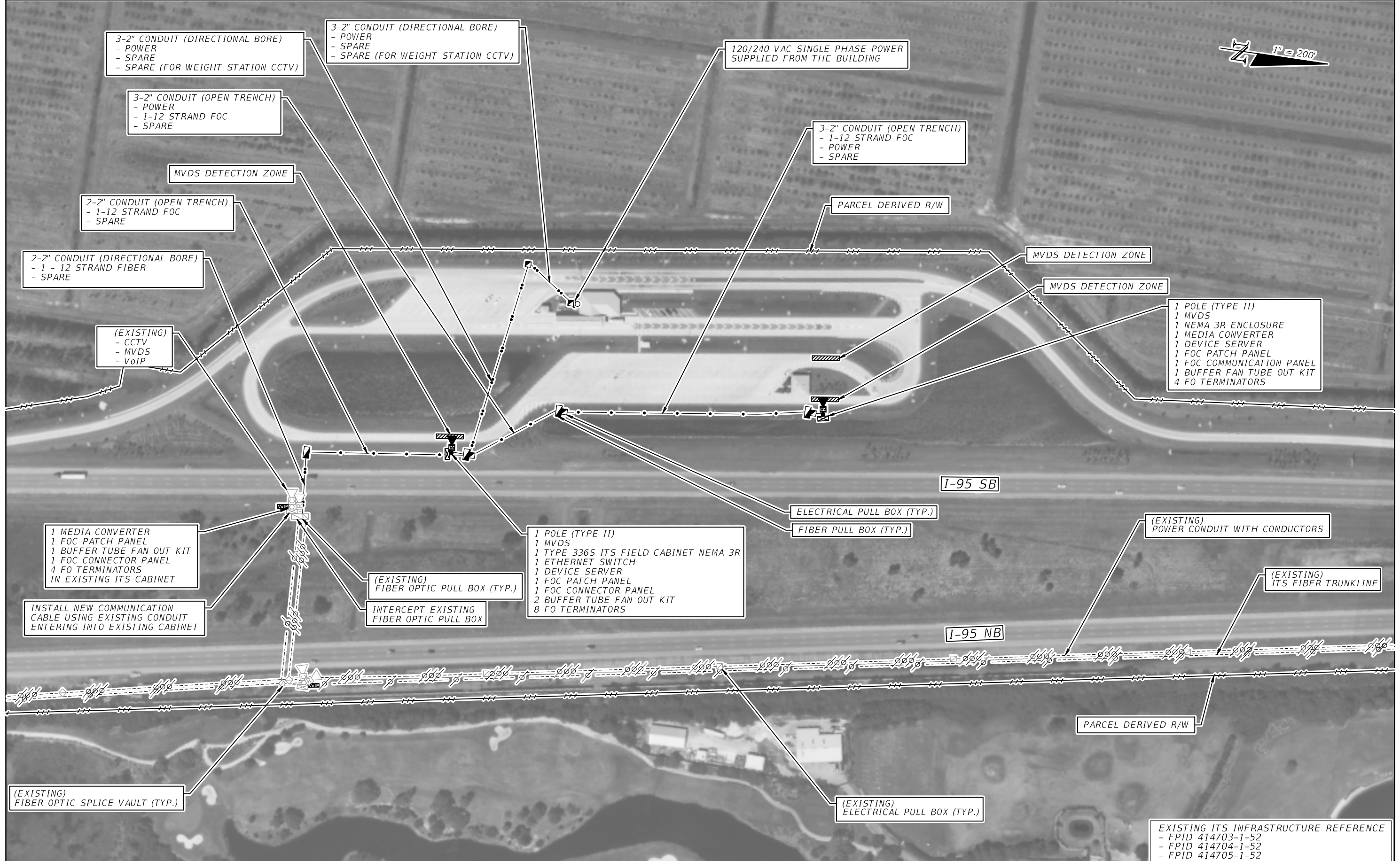
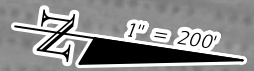
REST AREA TRUCK PARKING XXX SPACES AVAILABLE

TRUCK PARKING AVAILABILITY SIGN WITH 3-DIGIT EMBEDDED DMS AT SB MM 139.23 NORTH OF REST AREA (MM 133) (ADJUST SIGN LOCATION PER MUTCD SIGN SPACING REQUIREMENTS)
 - 3-DIGIT EMBEDDED DMS
 - POWER FROM NEAREST ITS CABINET
 - POLE MOUNTED NEMA CABINET
 - COMMUNICATION FROM NEAREST ITS CABINET

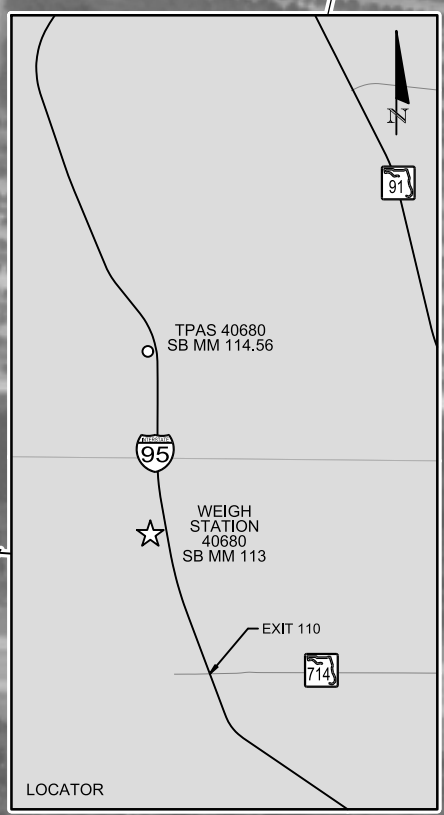
REVISIONS			
DATE	DESCRIPTION	DATE	DESCRIPTION

STATE OF FLORIDA DEPARTMENT OF TRANSPORTATION		
ROAD NO.	COUNTY	FINANCIAL PROJECT ID
1-95	ST. LUCIE	440090-1-52-01

TRUCK PARKING AVAILABILITY SYSTEM ST. LUCIE COUNTY, FDOT DISTRICT 4 TPAS SIGN 40392 SOUTHBOUND MILE MARKER 139.23	SHEET NO. IT-02A
--	-------------------------



REVISIONS				STATE OF FLORIDA DEPARTMENT OF TRANSPORTATION	TRUCK PARKING AVAILABILITY SYSTEM MARTIN COUNTY, FDOT DISTRICT 4 WEIGH STATION 40680 (22 SPACES) SOUTHBOUND MILE MARKER 113	SHEET NO. IT-03
DATE	DESCRIPTION	DATE	DESCRIPTION			



1 MULTI POST STATIC SIGN WITH EMBEDDED DMS
 1 MEDIA CONVERTER
 1 FIBER PULL BOX
 1 POWER PULL BOX
 1 FOC PATCH PANEL
 1 FOC CONNECTOR PANEL
 1 BUFFER TUBE FAN OUT KIT
 4 FO TERMINATORS

3-2" CONDUIT (DIRECTIONAL BORE)
 - 1-12 STRAND FOC
 - POWER
 - SPARE

PARCEL DERIVED R/W

MILE MARKER 115

I-95 SB

INTERCEPT EXISTING FIBER PULL BOX

INTERCEPT EXISTING POWER PULL BOX

1 MEDIA CONVERTER
 1 FOC PATCH PANEL
 1 BUFFER TUBE FAN OUT KIT
 1 FOC CONNECTOR PANEL
 4 FO TERMINATORS
 IN EXISTING ITS CABINET

(EXISTING) POWER CONDUIT WITH CONDUCTORS

(EXISTING) ITS FIBER TRUNKLINE

INSTALL NEW POWER AND COMMUNICATION CABLES USING EXISTING CONDUIT ENTERING INTO CABINET

I-95 NB

(EXISTING) ELECTRICAL PULL BOX (TYP.)

PARCEL DERIVED R/W

WEIGH STATION
 TRUCK PARKING
 XXX
 SPACES AVAILABLE

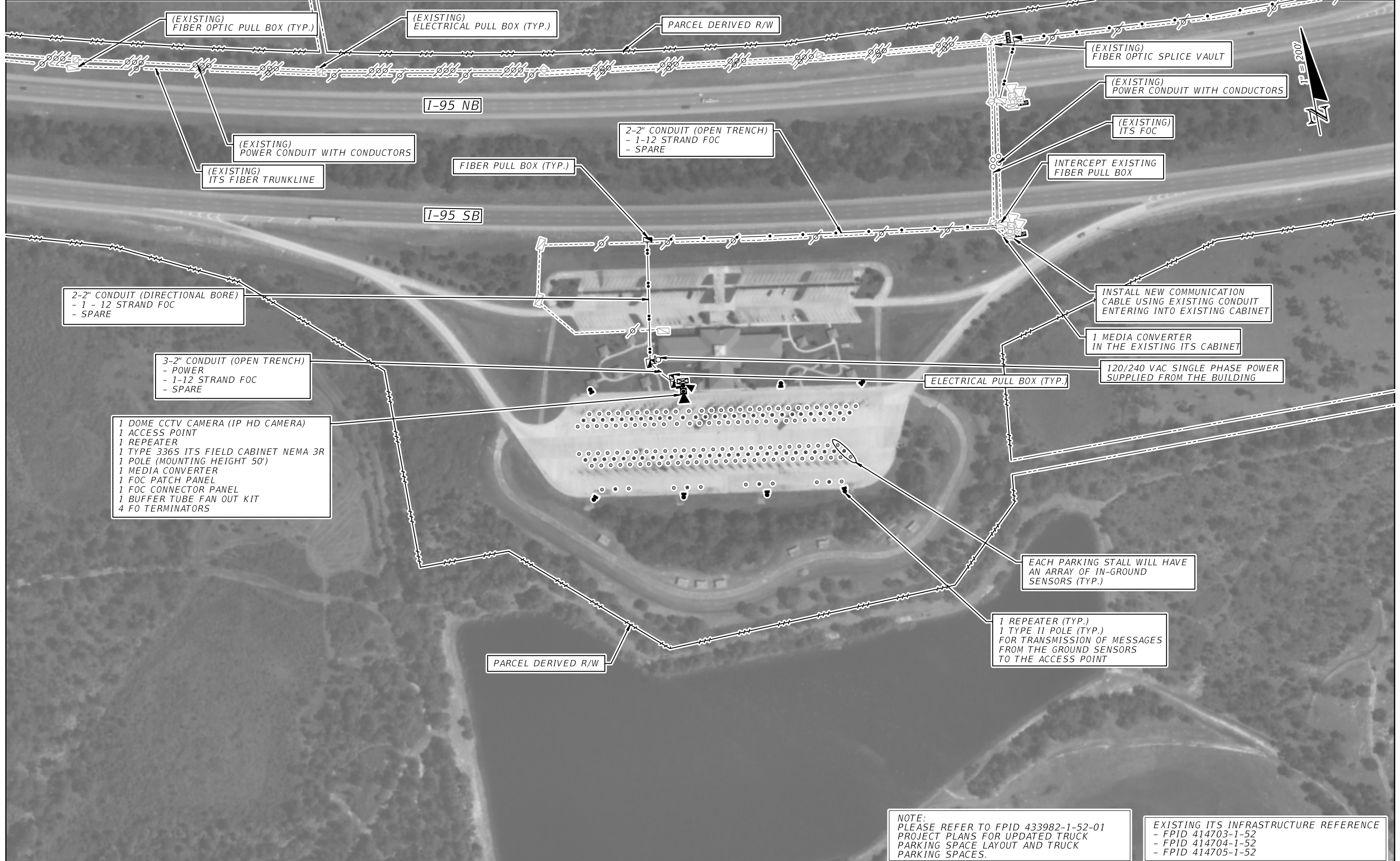
TRUCK PARKING AVAILABILITY SIGN WITH 3-DIGIT EMBEDDED DMS AT SB MM 114.56 NORTH OF WEIGH STATION (MM 113) (ADJUST SIGN LOCATION PER MUTCD SIGN SPACING REQUIREMENTS)
 - 3-DIGIT EMBEDDED DMS
 - POWER FROM NEAREST ITS CABINET
 - POLE MOUNTED NEMA CABINET
 - COMMUNICATION FROM NEAREST ITS CABINET

(EXISTING) - CCTV

(EXISTING) FIBER OPTIC SPLICE VAULT

EXISTING ITS INFRASTRUCTURE REFERENCE
 - FPID 414703-1-52
 - FPID 414704-1-52
 - FPID 414705-1-52

REVISIONS				STATE OF FLORIDA DEPARTMENT OF TRANSPORTATION			TRUCK PARKING AVAILABILITY SYSTEM ST. LUCIE COUNTY, FDOT DISTRICT 4 TPAS SIGN 40680 SOUTHBOUND MILE MARKER 114.56	SHEET NO. IT-03A
DATE	DESCRIPTION	DATE	DESCRIPTION	ROAD NO.	COUNTY	FINANCIAL PROJECT ID		
				I-95	ST. LUCIE	440090-1-52-01		

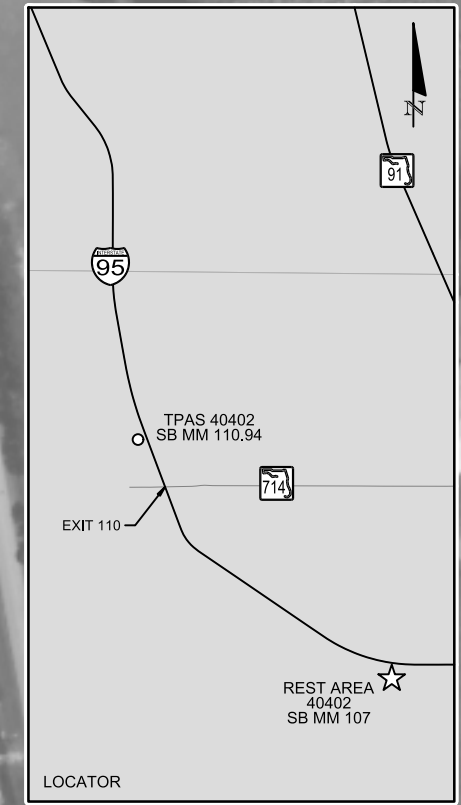


- 1 DOME CCTV CAMERA (IP HD CAMERA)
- 1 ACCESS POINT
- 1 REPEATER
- 1 TYPE 336S ITS FIELD CABINET NEMA 3R
- 1 POLE (MOUNTING HEIGHT 50')
- 1 MEDIA CONVERTER
- 1 FOC PATCH PANEL
- 1 FOC CONNECTOR PANEL
- 1 BUFFER TUBE FAN OUT KIT
- 4 FO TERMINATORS

NOTE:
PLEASE REFER TO FPID 433982-1-52-01
PROJECT PLANS FOR UPDATED TRUCK
PARKING SPACE LAYOUT AND TRUCK
PARKING SPACES.

EXISTING ITS INFRASTRUCTURE REFERENCE
- FPID 414703-1-52
- FPID 414704-1-52
- FPID 414705-1-52

REVISIONS					STATE OF FLORIDA DEPARTMENT OF TRANSPORTATION			TRUCK PARKING AVAILABILITY SYSTEM MARTIN COUNTY, FDOT DISTRICT 4 REST AREA 40402 (88 SPACES) SOUTHBOUND MILE MARKER 107	SHEET NO.
DATE	DESCRIPTION	DATE	DESCRIPTION		ROAD NO.	COUNTY	FINANCIAL PROJECT ID		IT-04
					I-95	MARTIN	440090-1-52-01		



- 1 MEDIA CONVERTER
- 1 FOC PATCH PANEL
- 1 BUFFER TUBE FAN OUT KIT
- 1 FOC CONNECTOR PANEL
- 4 FO TERMINATORS
- IN EXISTING ITS CABINET

- 3-2" CONDUIT (OPEN TRENCH)
- POWER
- 1 -12 STRAND FOC
- SPARE

- 1 MULTI POST STATIC SIGN WITH EMBEDDED DMS
- 1 MEDIA CONVERTER
- 1 FIBER PULL BOX
- 1 POWER PULL BOX
- 1 FOC PATCH PANEL
- 1 FOC CONNECTOR PANEL
- 1 BUFFER TUBE FAN OUT KIT
- 4 FO TERMINATORS

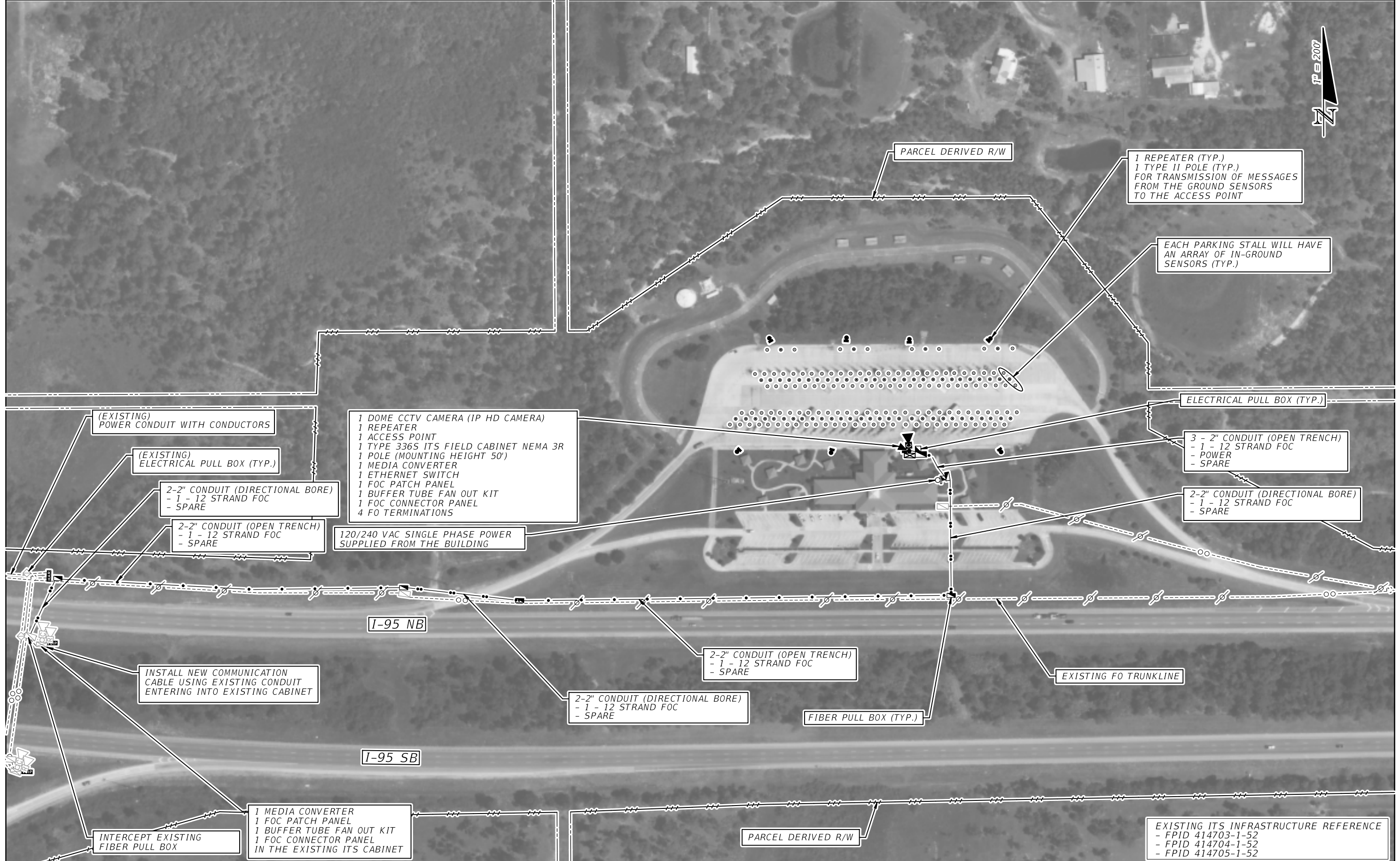
REST AREA
TRUCK PARKING
XXX
SPACES AVAILABLE

TRUCK PARKING AVAILABILITY SIGN WITH 3-DIGIT EMBEDDED DMS AT SB MM 110.94 NORTH OF REST AREA (MM 107) (ADJUST SIGN LOCATION PER MUTCD SIGN SPACING REQUIREMENTS)

- 3-DIGIT EMBEDDED DMS
- POWER FROM NEAREST ITS CABINET
- POLE MOUNTED NEMA CABINET
- COMMUNICATION FROM NEAREST ITS CABINET

- EXISTING ITS INFRASTRUCTURE REFERENCE
- FPID 414703-1-52
 - FPID 414704-1-52
 - FPID 414705-1-52

REVISIONS				STATE OF FLORIDA DEPARTMENT OF TRANSPORTATION			TRUCK PARKING AVAILABILITY SYSTEM MARTIN COUNTY, FDOT DISTRICT 4 TPAS SIGN 40402 SOUTHBOUND MILE MARKER 110.94	SHEET NO. IT-04A
DATE	DESCRIPTION	DATE	DESCRIPTION	ROAD NO.	COUNTY	FINANCIAL PROJECT ID		
				I-95	MARTIN	440090-1-52-01		



1 DOME CCTV CAMERA (IP HD CAMERA)
 1 REPEATER
 1 ACCESS POINT
 1 TYPE 336S ITS FIELD CABINET NEMA 3R
 1 POLE (MOUNTING HEIGHT 50')
 1 MEDIA CONVERTER
 1 ETHERNET SWITCH
 1 FOC PATCH PANEL
 1 BUFFER TUBE FAN OUT KIT
 1 FOC CONNECTOR PANEL
 4 FO TERMINATIONS

120/240 VAC SINGLE PHASE POWER
 SUPPLIED FROM THE BUILDING

1 REPEATER (TYP.)
 1 TYPE II POLE (TYP.)
 FOR TRANSMISSION OF MESSAGES
 FROM THE GROUND SENSORS
 TO THE ACCESS POINT

EACH PARKING STALL WILL HAVE
 AN ARRAY OF IN-GROUND
 SENSORS (TYP.)

ELECTRICAL PULL BOX (TYP.)

3 - 2" CONDUIT (OPEN TRENCH)
 - 1 - 12 STRAND FOC
 - POWER
 - SPARE

2-2" CONDUIT (DIRECTIONAL BORE)
 - 1 - 12 STRAND FOC
 - SPARE

2-2" CONDUIT (OPEN TRENCH)
 - 1 - 12 STRAND FOC
 - SPARE

2-2" CONDUIT (DIRECTIONAL BORE)
 - 1 - 12 STRAND FOC
 - SPARE

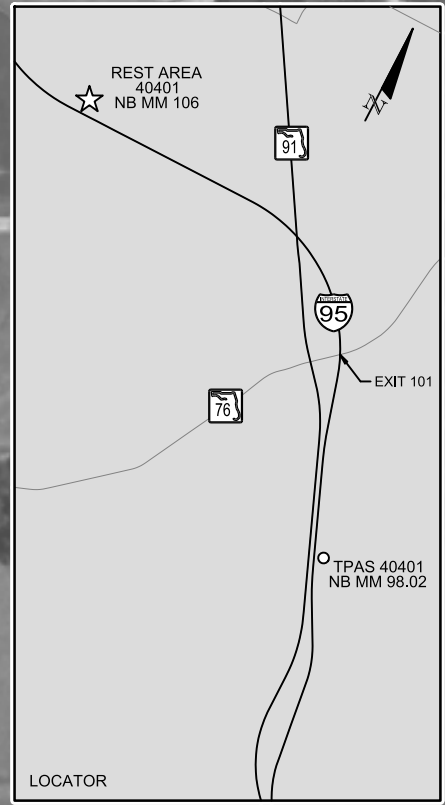
FIBER PULL BOX (TYP.)

EXISTING FO TRUNKLINE

1 MEDIA CONVERTER
 1 FOC PATCH PANEL
 1 BUFFER TUBE FAN OUT KIT
 1 FOC CONNECTOR PANEL
 IN THE EXISTING ITS CABINET

EXISTING ITS INFRASTRUCTURE REFERENCE
 - FPID 414703-1-52
 - FPID 414704-1-52
 - FPID 414705-1-52

REVISIONS				STATE OF FLORIDA DEPARTMENT OF TRANSPORTATION	ROAD NO.	COUNTY	FINANCIAL PROJECT ID	TRUCK PARKING AVAILABILITY SYSTEM MARTIN COUNTY, FDOT DISTRICT 4 REST AREA 40401 (60 SPACES) NORTHBOUND MILE MARKER 106	SHEET NO.
DATE	DESCRIPTION	DATE	DESCRIPTION						



- 1 MULTI POST STATIC SIGN WITH EMBEDDED DMS
- 1 MEDIA CONVERTER
- 1 FIBER PULL BOX
- 1 POWER PULL BOX
- 1 FOC PATCH PANEL
- 1 BUFFER TUBE FAN OUT KIT
- 1 FOC CONNECTOR PANEL
- 4 FO TERMINATORS

- 1 MEDIA CONVERTER
 - 1 FOC PATCH PANEL
 - 1 BUFFER TUBE FAN OUT KIT
 - 1 FOC CONNECTOR PANEL
 - 4 FO TERMINATORS
- IN THE EXISTING ITS CABINET

INSTALL NEW POWER AND COMMUNICATION CABLES USING EXISTING CONDUIT ENTERING INTO CABINET

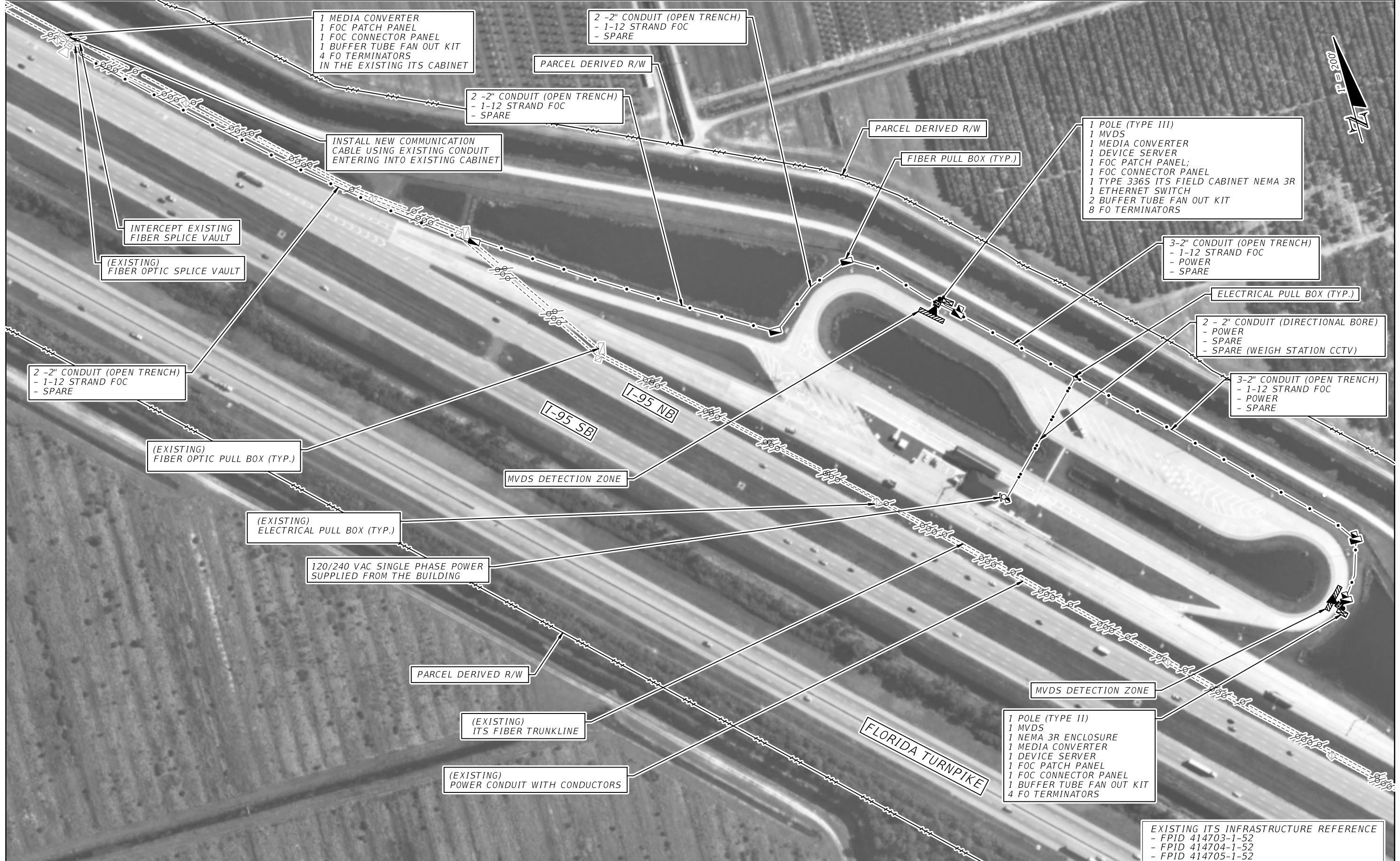
- EXISTING ITS INFRASTRUCTURE REFERENCE
- FPID 414703-1-52
 - FPID 414704-1-52
 - FPID 414705-1-52

REST AREA
TRUCK PARKING
XXX
SPACES AVAILABLE

TRUCK PARKING AVAILABILITY SIGN WITH 3-DIGIT EMBEDDED DMS AT NB MM 98.02 SOUTH OF REST AREA (MM 106) (ADJUST SIGN LOCATION PER MUTCD SIGN SPACING REQUIREMENTS)

- 3-DIGIT EMBEDDED DMS
- POWER FROM NEAREST ITS CABINET
- POLE MOUNTED NEMA CABINET
- COMMUNICATION FROM NEAREST ITS CABINET

REVISIONS				STATE OF FLORIDA DEPARTMENT OF TRANSPORTATION			TRUCK PARKING AVAILABILITY SYSTEM MARTIN COUNTY, FDOT DISTRICT 4 TPAS SIGN 40401 NORTHBOUND MILE MARKER 98.02	SHEET NO. IT-05A
DATE	DESCRIPTION	DATE	DESCRIPTION	ROAD NO.	COUNTY	FINANCIAL PROJECT ID		
				1-95	MARTIN	440090-1-52-01		



1 MEDIA CONVERTER
 1 FOC PATCH PANEL
 1 FOC CONNECTOR PANEL
 1 BUFFER TUBE FAN OUT KIT
 4 FO TERMINATORS
 IN THE EXISTING ITS CABINET

2 -2" CONDUIT (OPEN TRENCH)
 - 1-12 STRAND FOC
 - SPARE

2 -2" CONDUIT (OPEN TRENCH)
 - 1-12 STRAND FOC
 - SPARE

INSTALL NEW COMMUNICATION
 CABLE USING EXISTING CONDUIT
 ENTERING INTO EXISTING CABINET

INTERCEPT EXISTING
 FIBER SPLICE VAULT

(EXISTING)
 FIBER OPTIC SPLICE VAULT

2 -2" CONDUIT (OPEN TRENCH)
 - 1-12 STRAND FOC
 - SPARE

(EXISTING)
 FIBER OPTIC PULL BOX (TYP.)

(EXISTING)
 ELECTRICAL PULL BOX (TYP.)

120/240 VAC SINGLE PHASE POWER
 SUPPLIED FROM THE BUILDING

PARCEL DERIVED R/W

(EXISTING)
 ITS FIBER TRUNKLINE

(EXISTING)
 POWER CONDUIT WITH CONDUCTORS

PARCEL DERIVED R/W

PARCEL DERIVED R/W

FIBER PULL BOX (TYP.)

1 POLE (TYPE III)
 1 MVDS
 1 MEDIA CONVERTER
 1 DEVICE SERVER
 1 FOC PATCH PANEL;
 1 FOC CONNECTOR PANEL
 1 TYPE 336S ITS FIELD CABINET NEMA 3R
 1 ETHERNET SWITCH
 2 BUFFER TUBE FAN OUT KIT
 8 FO TERMINATORS

3-2" CONDUIT (OPEN TRENCH)
 - 1-12 STRAND FOC
 - POWER
 - SPARE

ELECTRICAL PULL BOX (TYP.)

2 - 2" CONDUIT (DIRECTIONAL BORE)
 - POWER
 - SPARE
 - SPARE (WEIGH STATION CCTV)

3-2" CONDUIT (OPEN TRENCH)
 - 1-12 STRAND FOC
 - POWER
 - SPARE

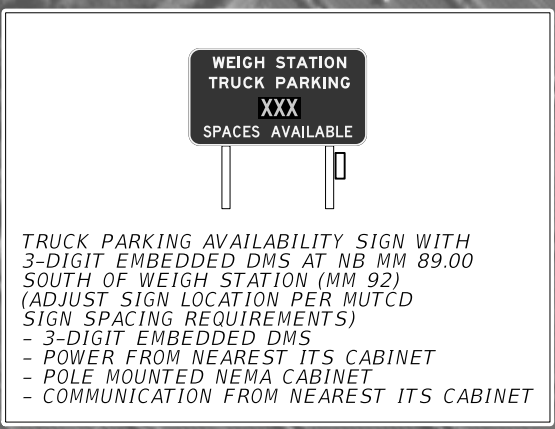
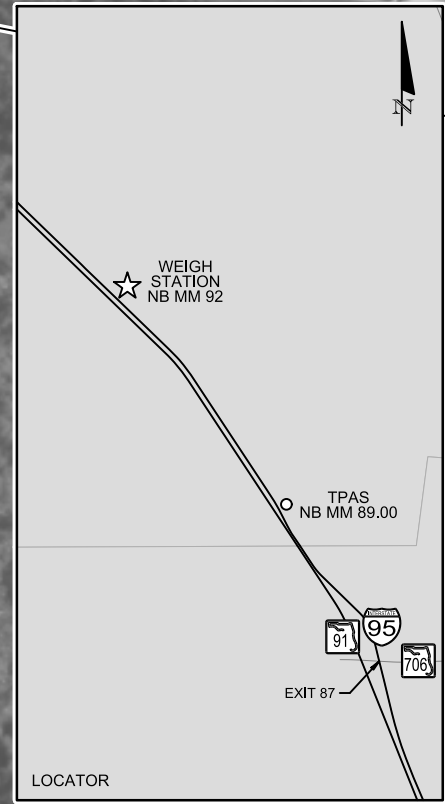
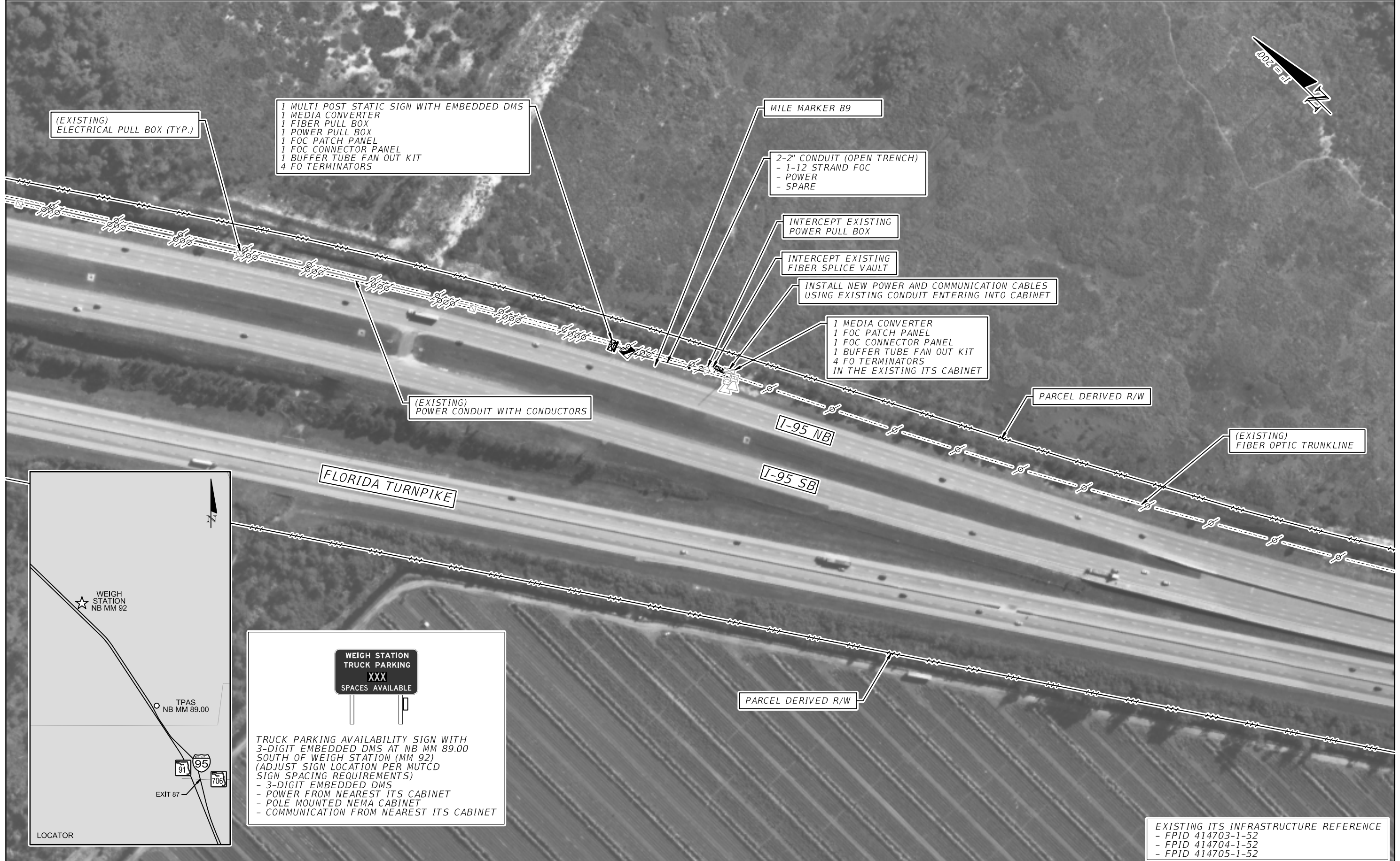
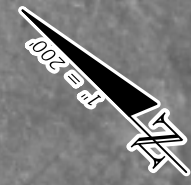
MVDS DETECTION ZONE

MVDS DETECTION ZONE

1 POLE (TYPE II)
 1 MVDS
 1 NEMA 3R ENCLOSURE
 1 MEDIA CONVERTER
 1 DEVICE SERVER
 1 FOC PATCH PANEL
 1 FOC CONNECTOR PANEL
 1 BUFFER TUBE FAN OUT KIT
 4 FO TERMINATORS

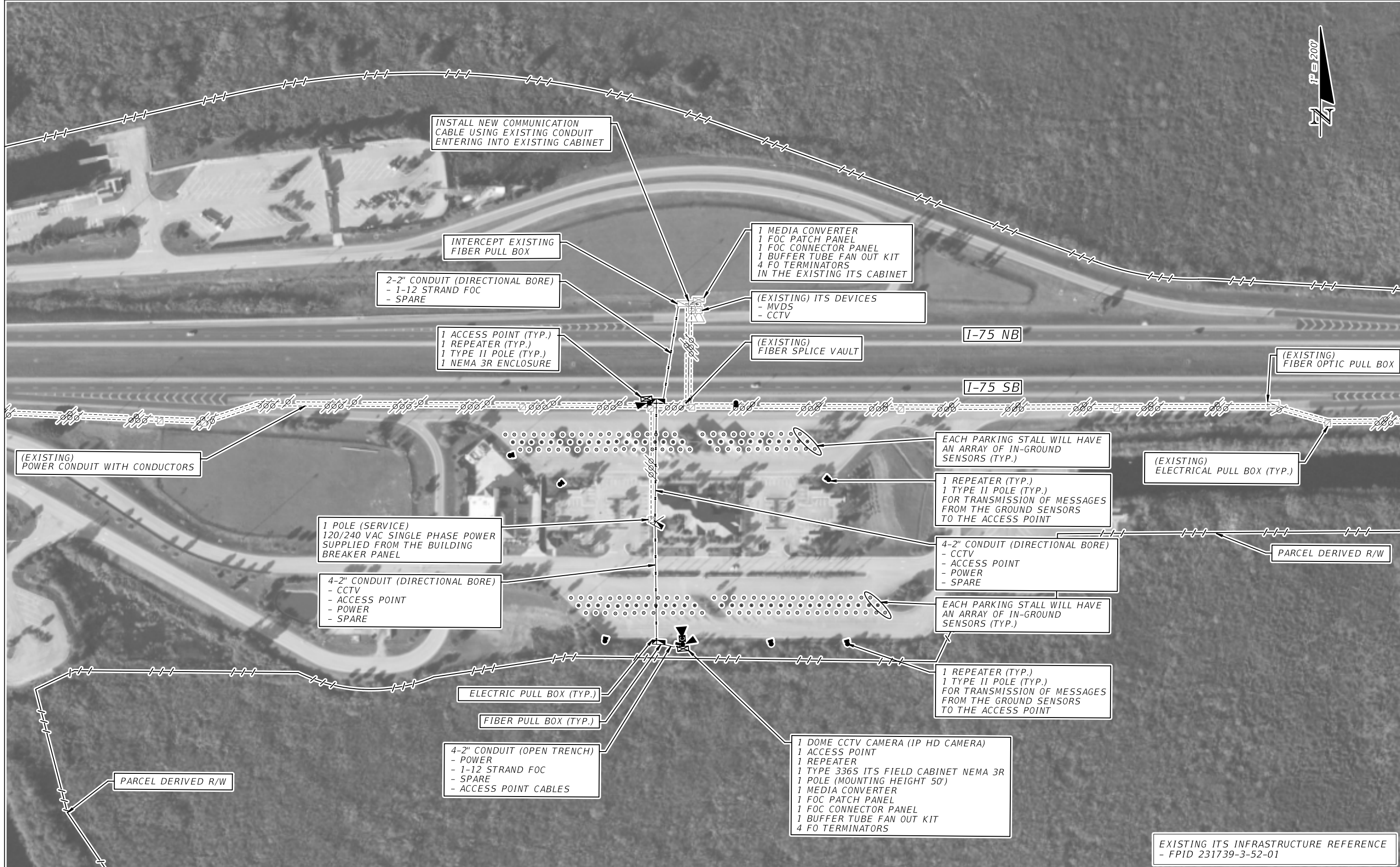
EXISTING ITS INFRASTRUCTURE REFERENCE
 - FPID 414703-1-52
 - FPID 414704-1-52
 - FPID 414705-1-52

REVISIONS				STATE OF FLORIDA DEPARTMENT OF TRANSPORTATION	TRUCK PARKING AVAILABILITY SYSTEM MARTIN COUNTY, FDOT DISTRICT 4 MARTIN COUNTY WEIGH STATION (13 SPACES) NORTHBOUND MILE MARKER 92	SHEET NO. IT-06
DATE	DESCRIPTION	DATE	DESCRIPTION			



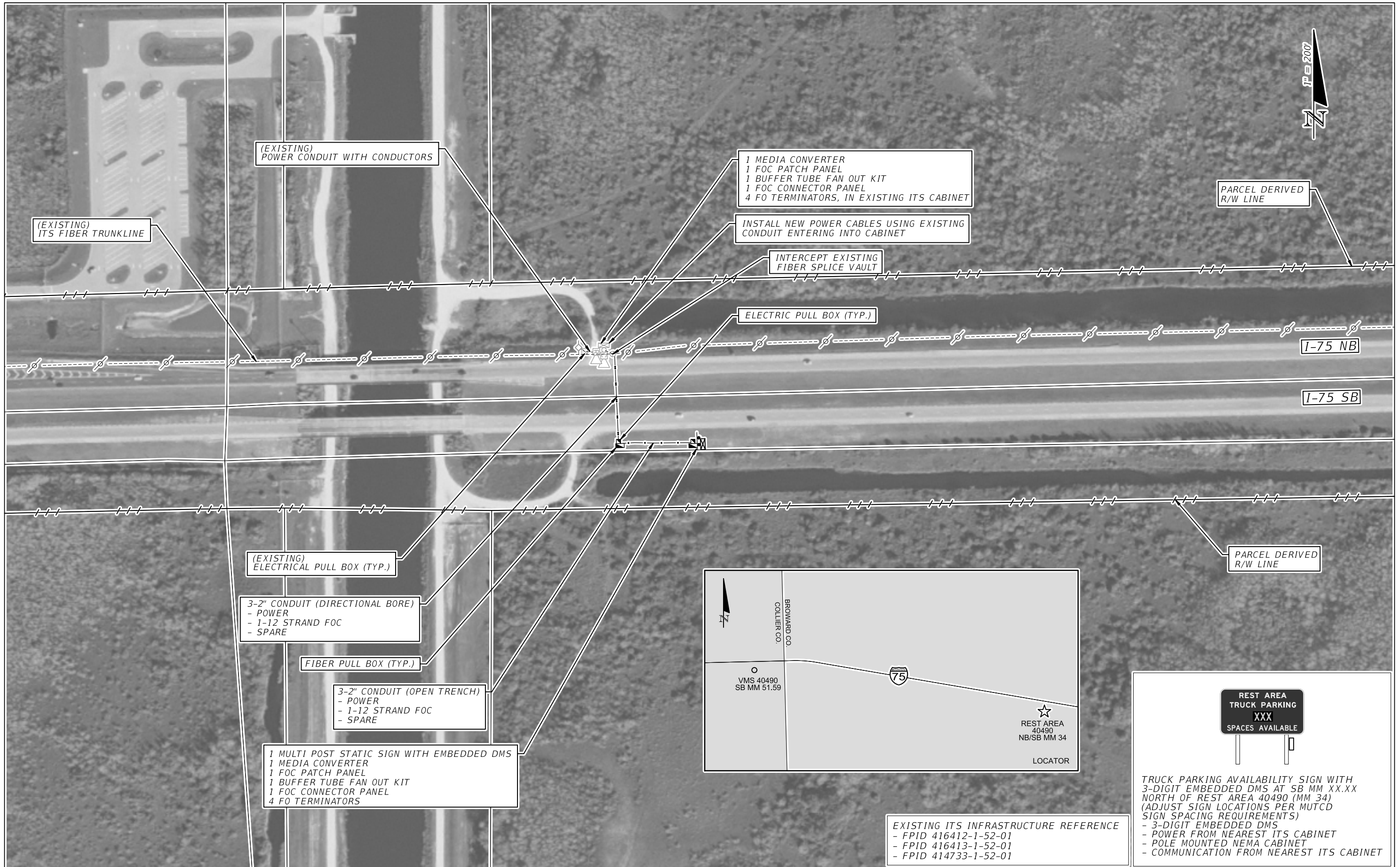
EXISTING ITS INFRASTRUCTURE REFERENCE
 - FPID 414703-1-52
 - FPID 414704-1-52
 - FPID 414705-1-52

REVISIONS				STATE OF FLORIDA DEPARTMENT OF TRANSPORTATION			TRUCK PARKING AVAILABILITY SYSTEM MARTIN COUNTY, FDOT DISTRICT 5 MARTIN COUNTY TPAS SIGN NORTHBOUND MILE MARKER 89.00	SHEET NO. IT-06A
DATE	DESCRIPTION	DATE	DESCRIPTION	ROAD NO.	COUNTY	FINANCIAL PROJECT ID		
				I-95	MARTIN	440090-1-52-01		



EXISTING ITS INFRASTRUCTURE REFERENCE
- FPID 231739-3-52-01

REVISIONS				STATE OF FLORIDA DEPARTMENT OF TRANSPORTATION	TRUCK PARKING AVAILABILITY SYSTEM BROWARD COUNTY, FDOT DISTRICT 4 REST AREA 40490 (60 SPACES) NORTH/SOUTH MILE MARKER 34	SHEET NO. IT-07
DATE	DESCRIPTION	DATE	DESCRIPTION			



REVISIONS			
DATE	DESCRIPTION	DATE	DESCRIPTION

--

STATE OF FLORIDA DEPARTMENT OF TRANSPORTATION		
ROAD NO.	COUNTY	FINANCIAL PROJECT ID
1-75	COLLIER	440090-1-52-01

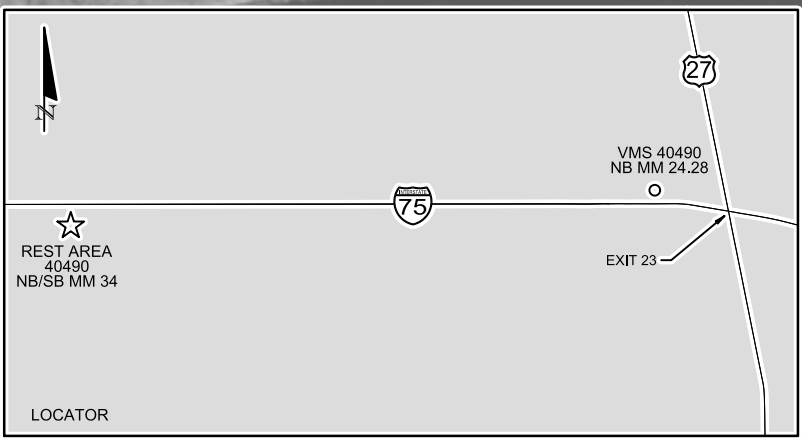
TRUCK PARKING AVAILABILITY SYSTEM
BROWARD COUNTY, FDOT DISTRICT 4
TPAS SIGN 40490
SOUTHBOUND MILE MARKER 51.59

SHEET NO.
IT-07A

FIBER OPTIC PULL BOX (TYP.)

3-2" CONDUIT (OPEN TRENCH)
 - POWER
 - 1-12 STRAND FOC
 - SPARE

1 MULTI POST STATIC SIGN WITH EMBEDDED DMS
 1 MEDIA CONVERTER
 1 FOC PATCH PANEL
 1 BUFFER TUBE FAN OUT KIT
 1 FOC CONNECTOR PANEL
 4 FO TERMINATORS



PARCEL DERIVED R/W LINE

PARCEL DERIVED R/W LINE

I-75 NB

I-75 SB

3-2" CONDUIT (DIRECTIONAL BORE)
 - POWER
 - 1-12 STRAND FOC
 - SPARE

1 MEDIA CONVERTER
 1 FOC PATCH PANEL
 1 BUFFER TUBE FAN OUT KIT
 1 FOC CONNECTOR PANEL
 4 FO TERMINATORS, IN EXISTING ITS CABINET

INTERCEPT EXISTING FIBER SPLICE VAULT

INSTALL NEW POWER CABLES USING EXISTING CONDUIT ENTERING INTO CABINET

(EXISTING) POWER CONDUIT WITH CONDUCTORS

(EXISTING) ITS FIBER TRUNKLINE

PARCEL DERIVED R/W LINE



TRUCK PARKING AVAILABILITY SIGN WITH 3-DIGIT EMBEDDED DMS AT NB MM 24.28 SOUTH OF REST AREA 40490 (MM 34) (ADJUST SIGN LOCATIONS PER MUTCD SIGN SPACING REQUIREMENTS)
 - 3-DIGIT EMBEDDED DMS
 - POWER FROM NEAREST ITS CABINET
 - POLE MOUNTED NEMA CABINET
 - COMMUNICATION FROM NEAREST ITS CABINET

EXISTING ITS INFRASTRUCTURE REFERENCE - FPID 231739-3-52-01

REVISIONS				STATE OF FLORIDA DEPARTMENT OF TRANSPORTATION			TRUCK PARKING AVAILABILITY SYSTEM BROWARD COUNTY, FDOT DISTRICT 4 TPAS SIGN 40490 NORTHBOUND MILE MARKER 29.68	SHEET NO. IT-07B
DATE	DESCRIPTION	DATE	DESCRIPTION	ROAD NO.	COUNTY	FINANCIAL PROJECT ID		
				I-75	BROWARD	440090-1-52-01		